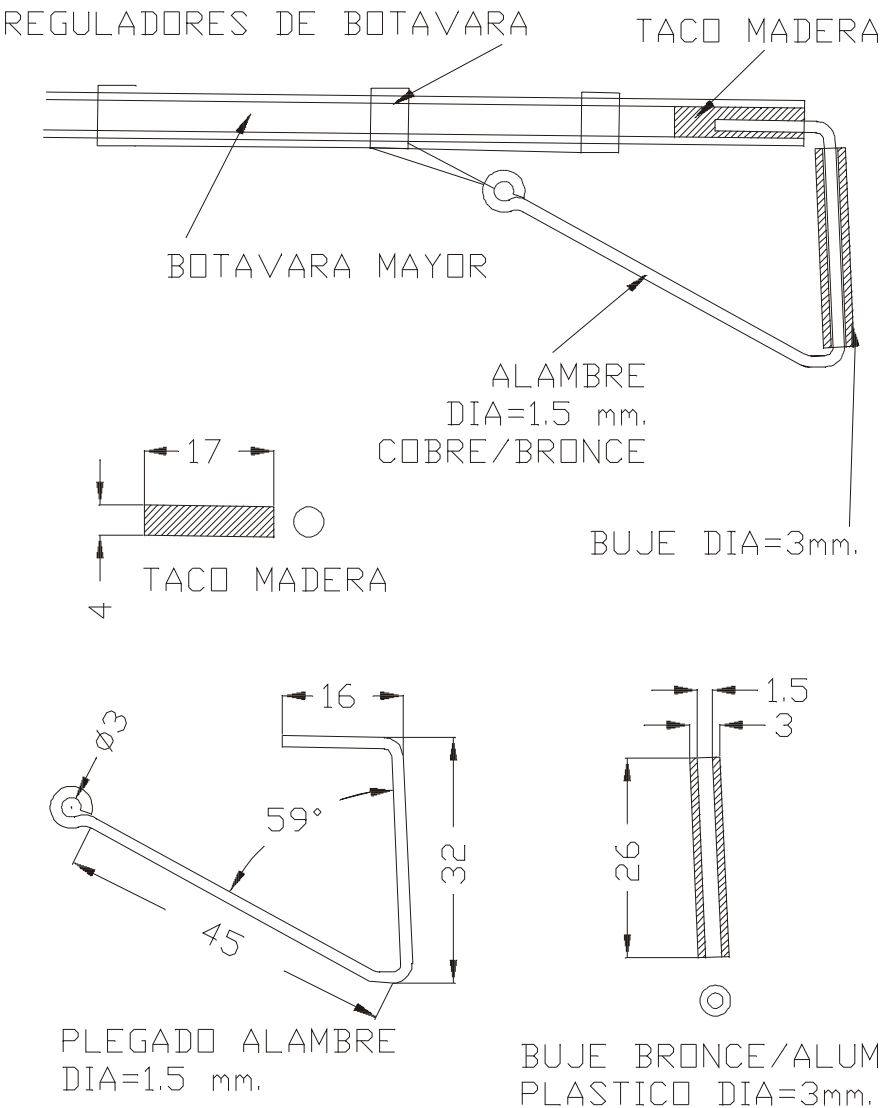


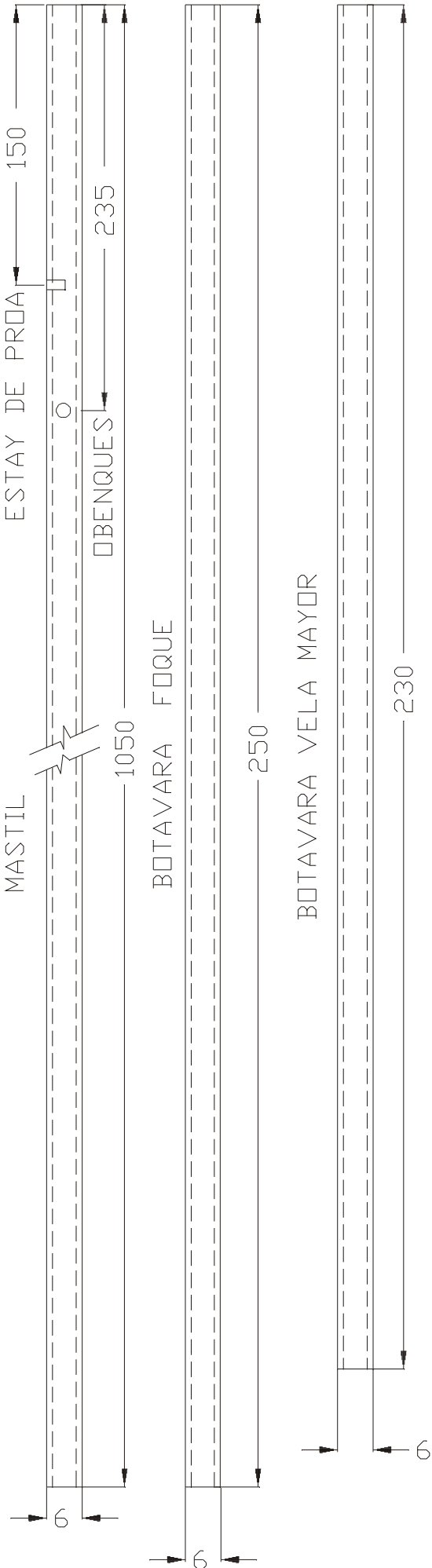
7

DETALLE GANSERA Y VANG ESCALA 1:1



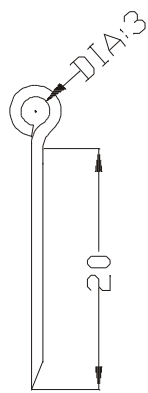
8

TUBO FIBRA CARBONO  
O ALUMINIO  
DIAMETRO EXT.=6mm



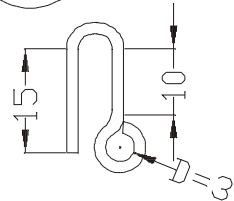
9

ARRAIGOS  
A CUBIERTA  
SIN ESCALA  
CANT= 16



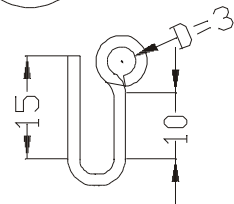
10

ARRAIGOS  
AL MASTIL  
SIN ESCALA  
CANT=3



11

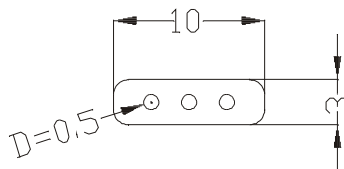
TERMINALES  
INFERIORES  
OBENQUES  
S/ESCALA  
CANT= 4



LOS ARRAIGOS Y TERMINALES SON DE ALAMBRE  
DENTAL DE DIA.= 0,8 mm.

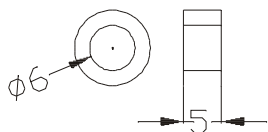
12

REGULADORES OBENQUES  
PLASTICO E=2 mm.  
SIN ESCALA  
CANT= 6



13

REGULADORES  
BOTAVARAS  
CANT= 9  
SIN ESCALA



MANGUERA PLASTICA  
DIA.INT.=6mm.

14

TOPE MASTIL-ESC. 1:1

