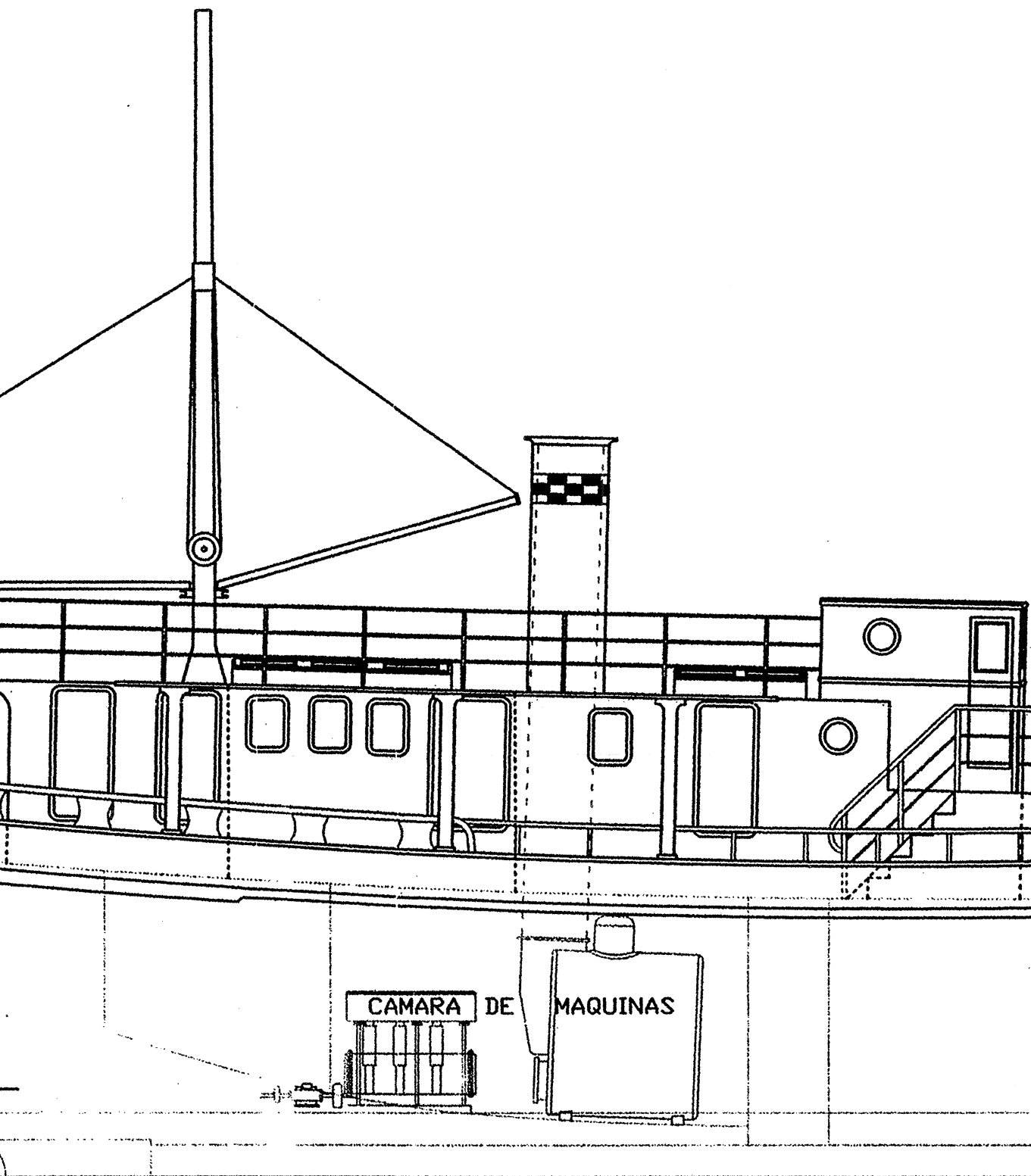
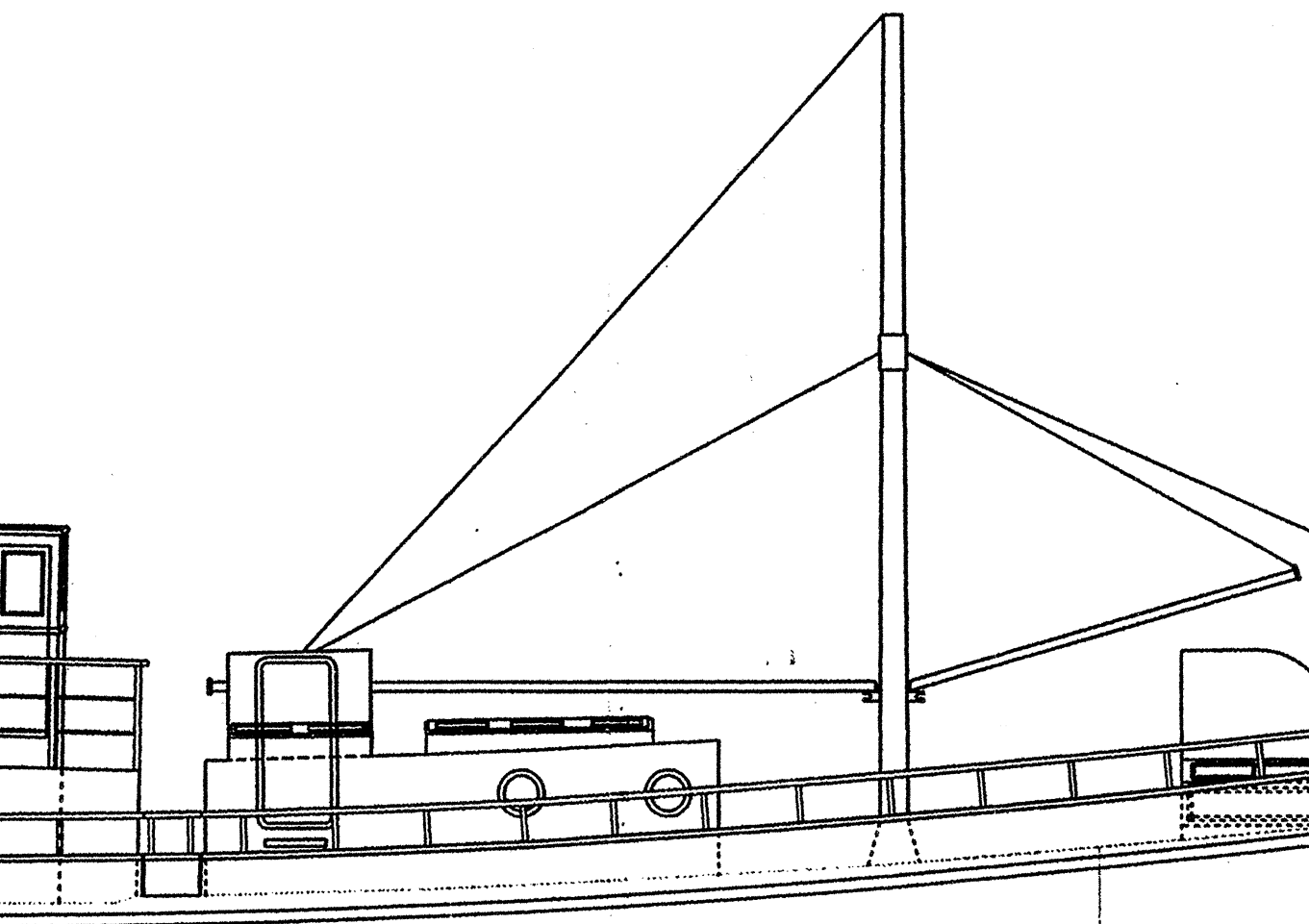


Ppp

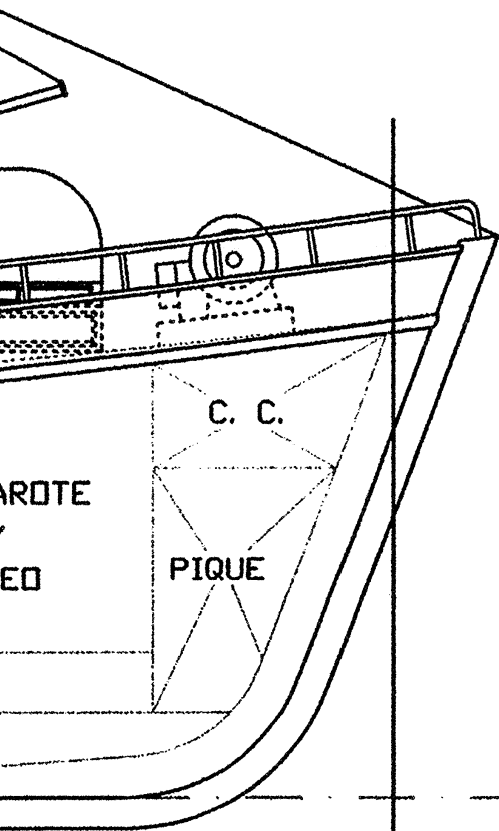




SALON DEL PASAJE

CAMAROTE
Y
ASEO

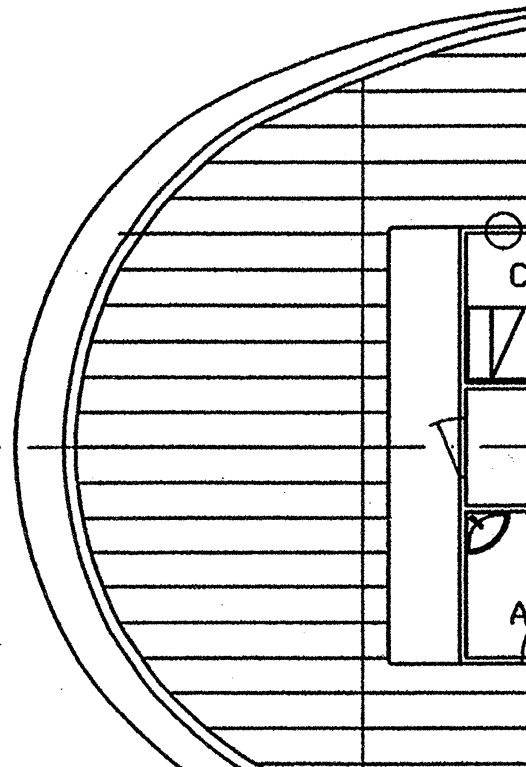
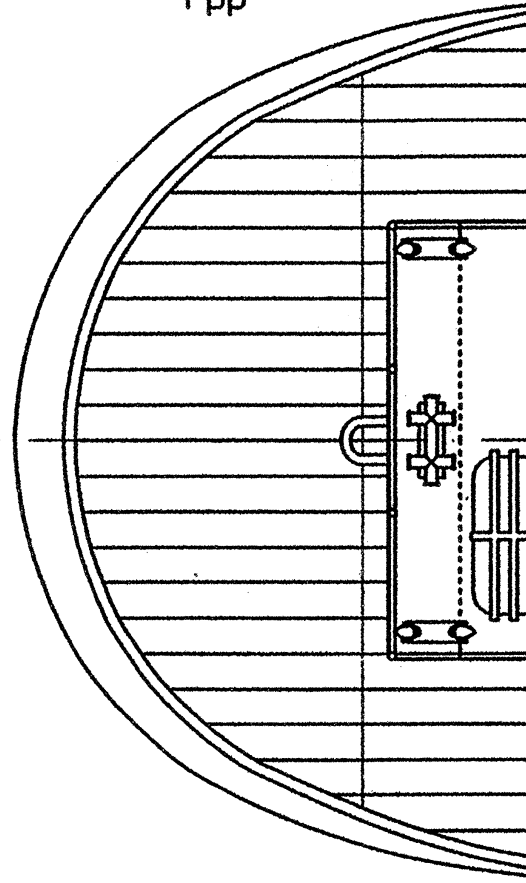


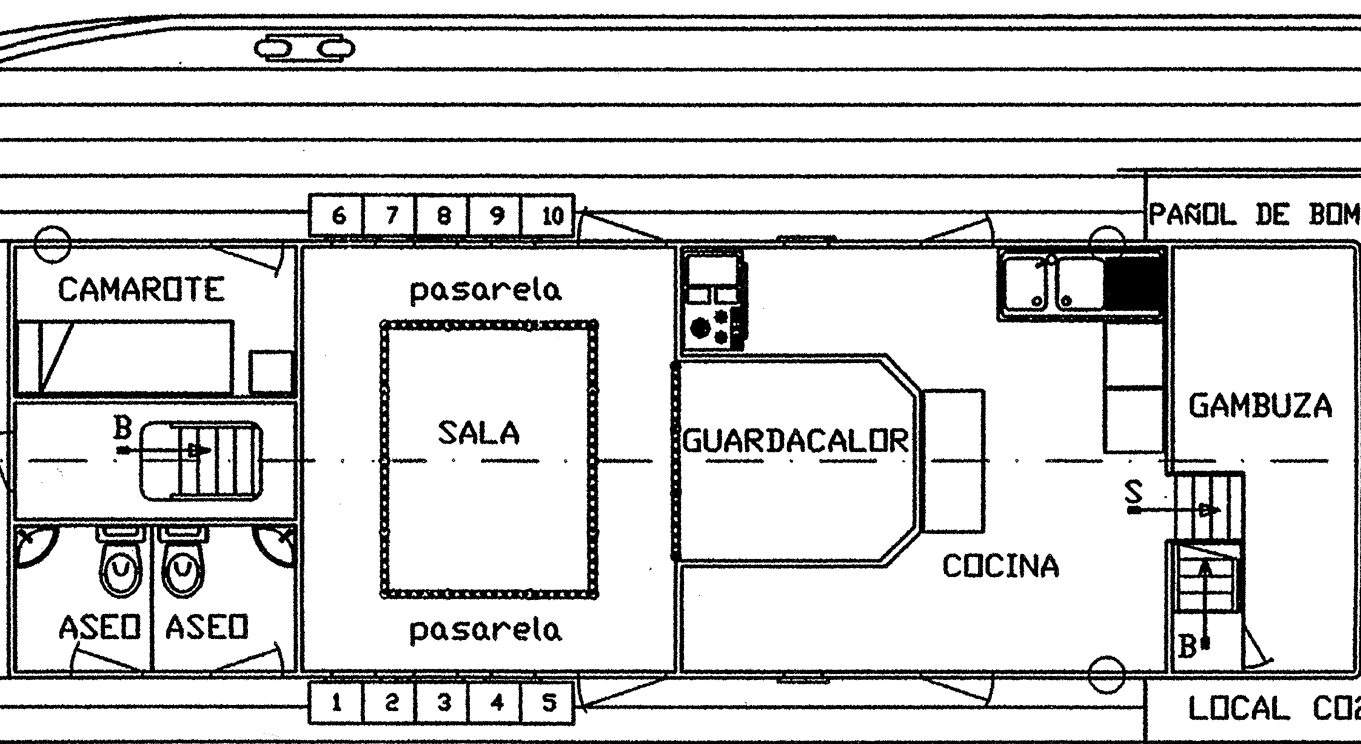
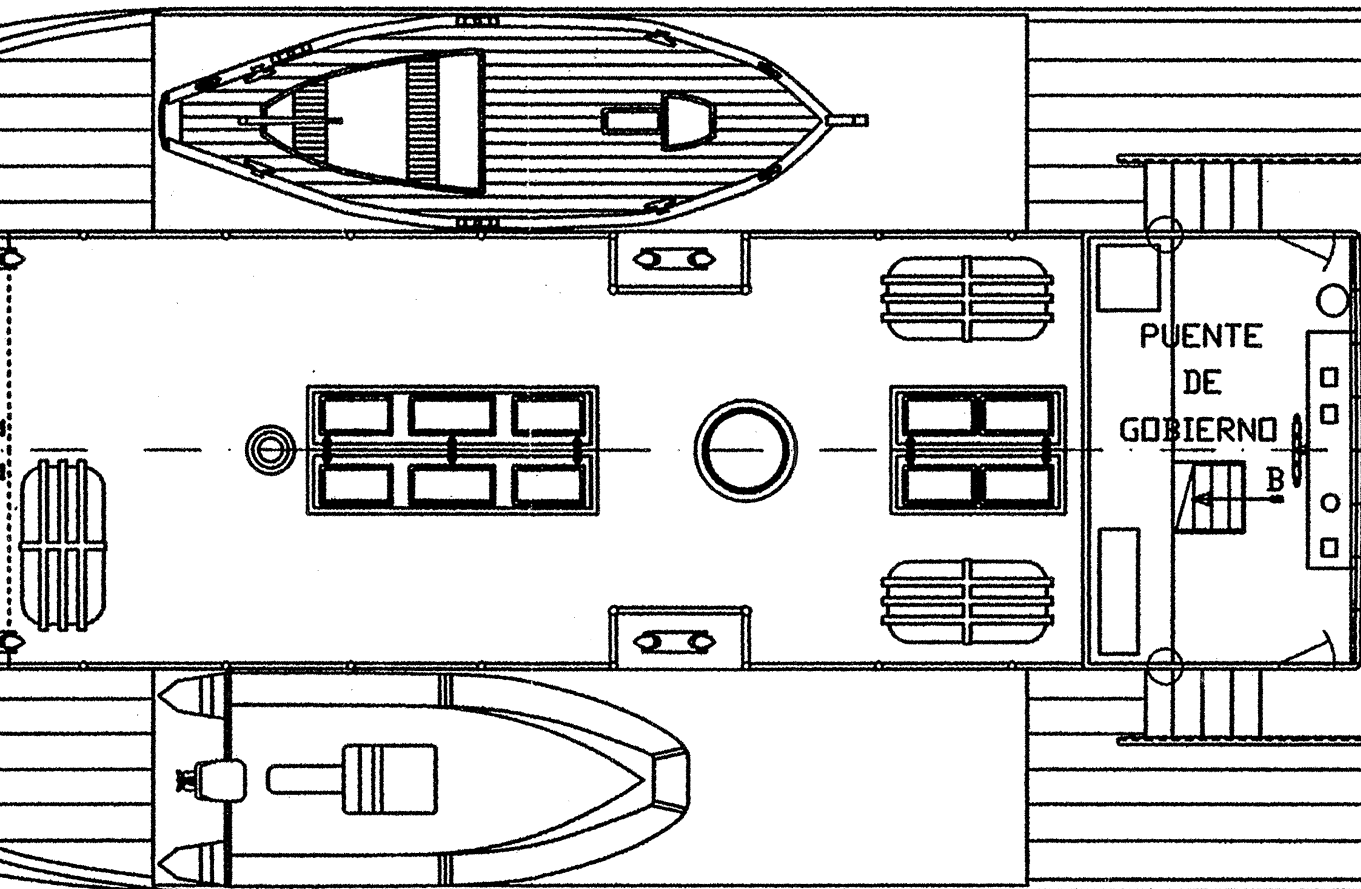


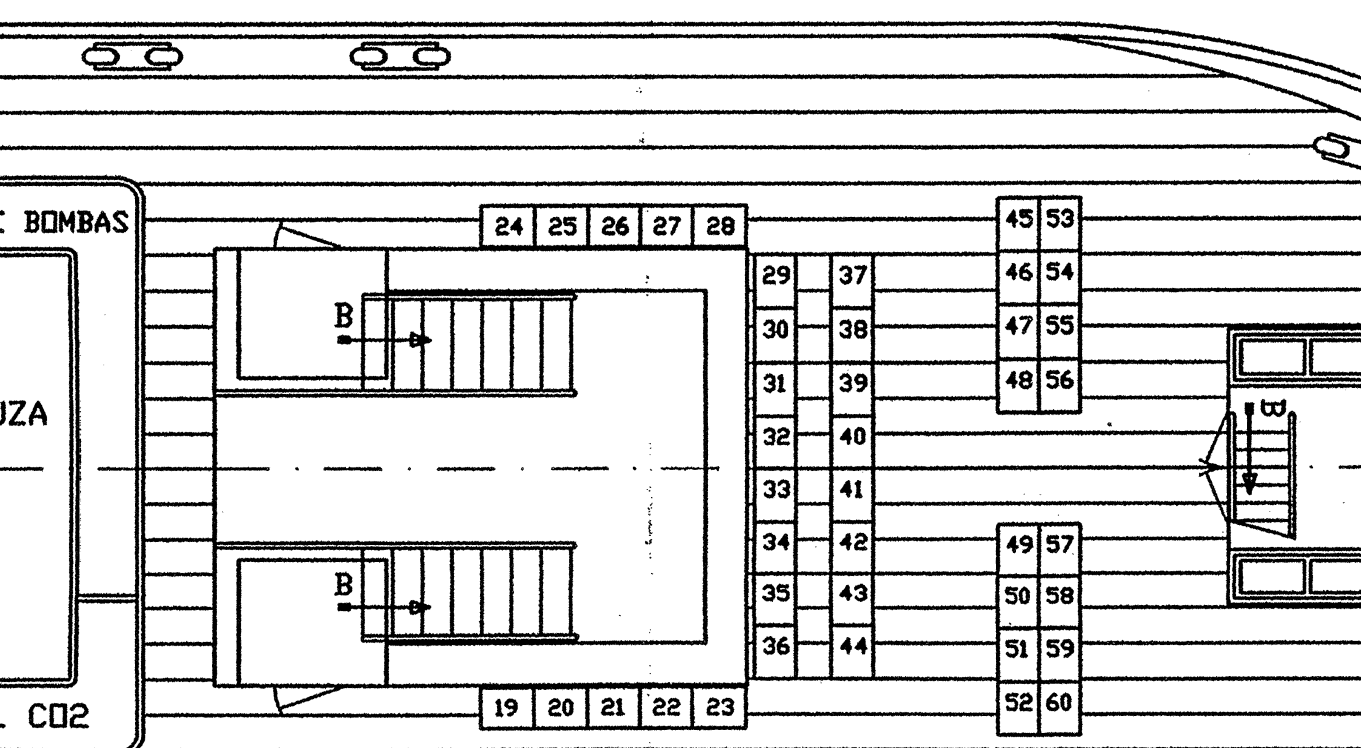
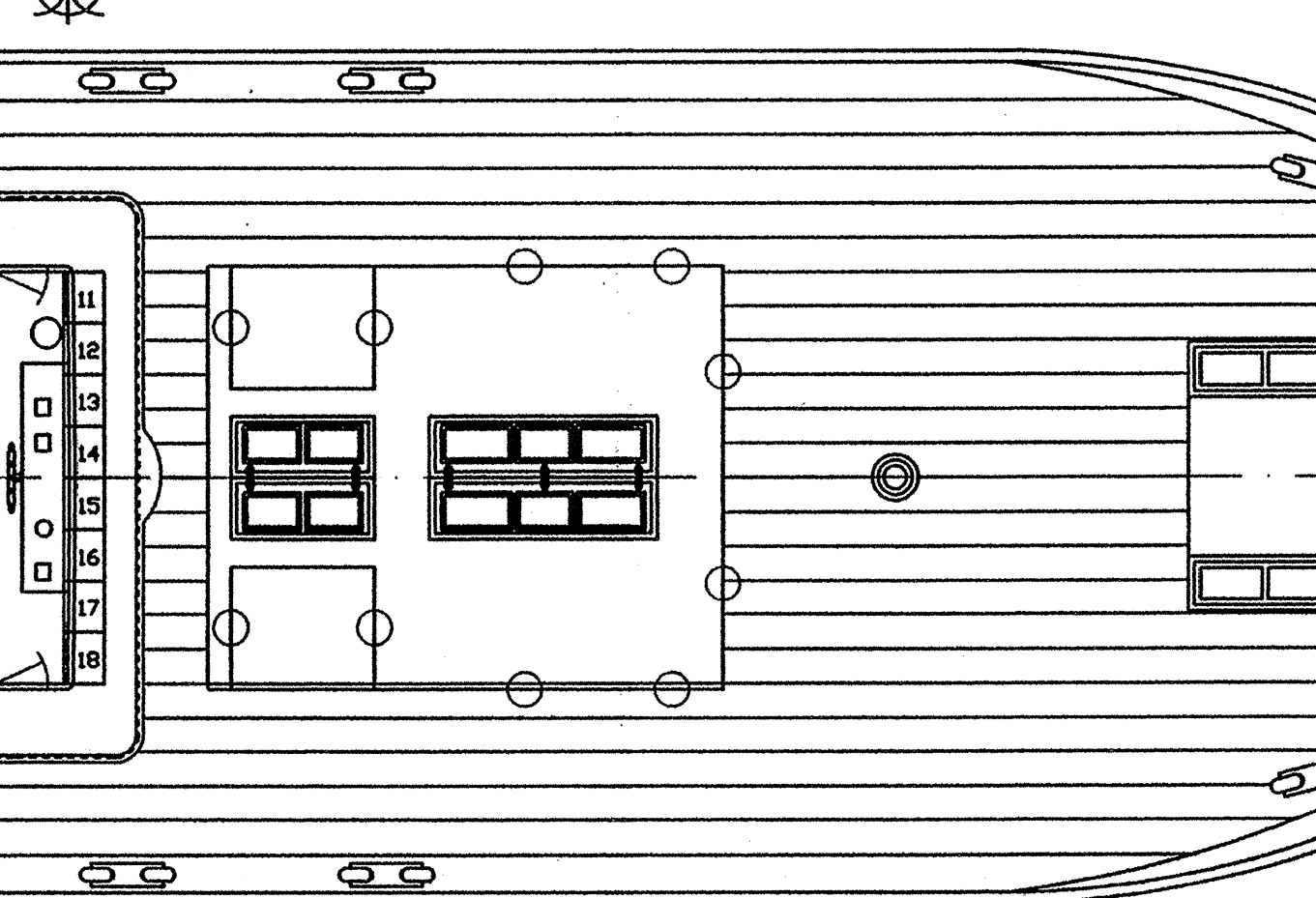
LINEA BASE

Ppr

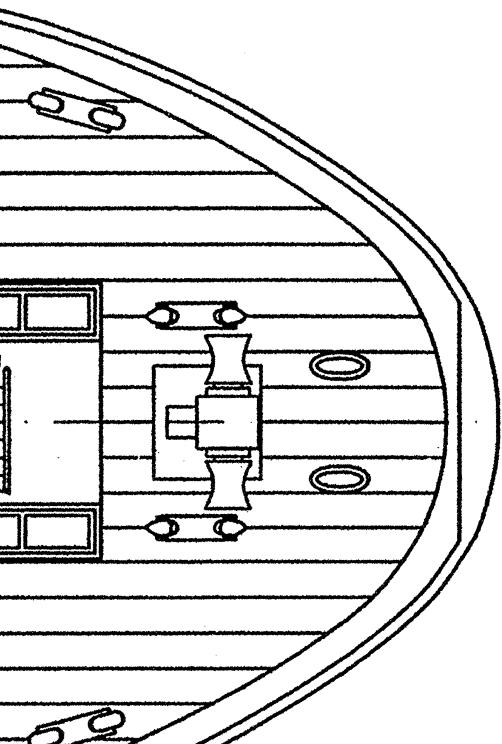
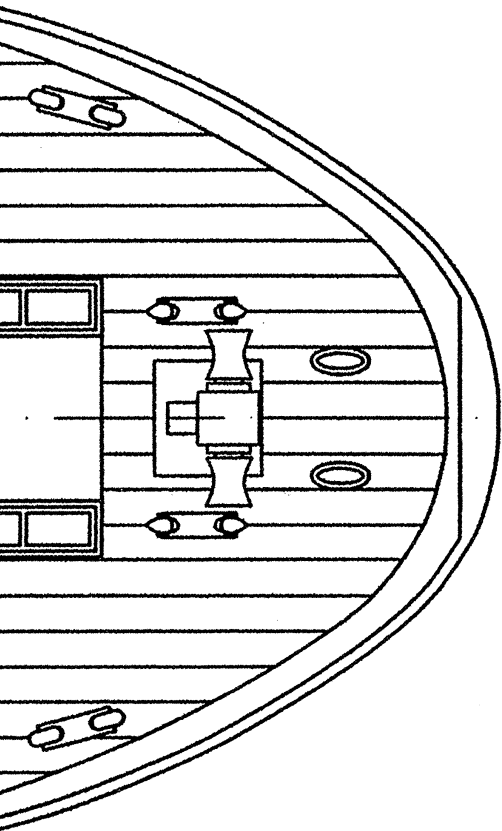
Ppp

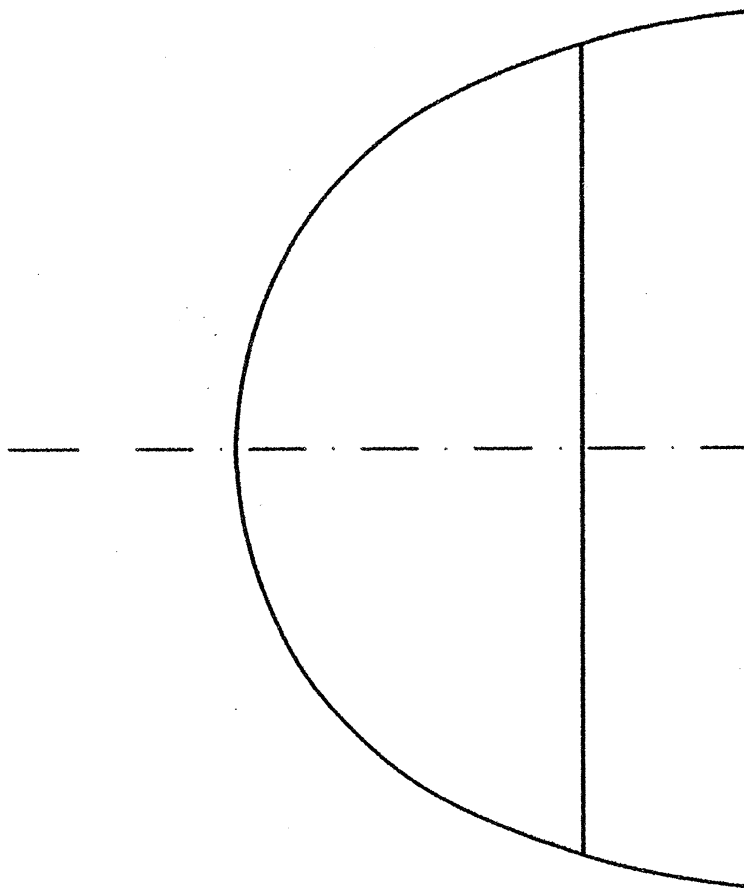
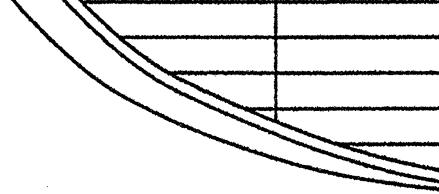


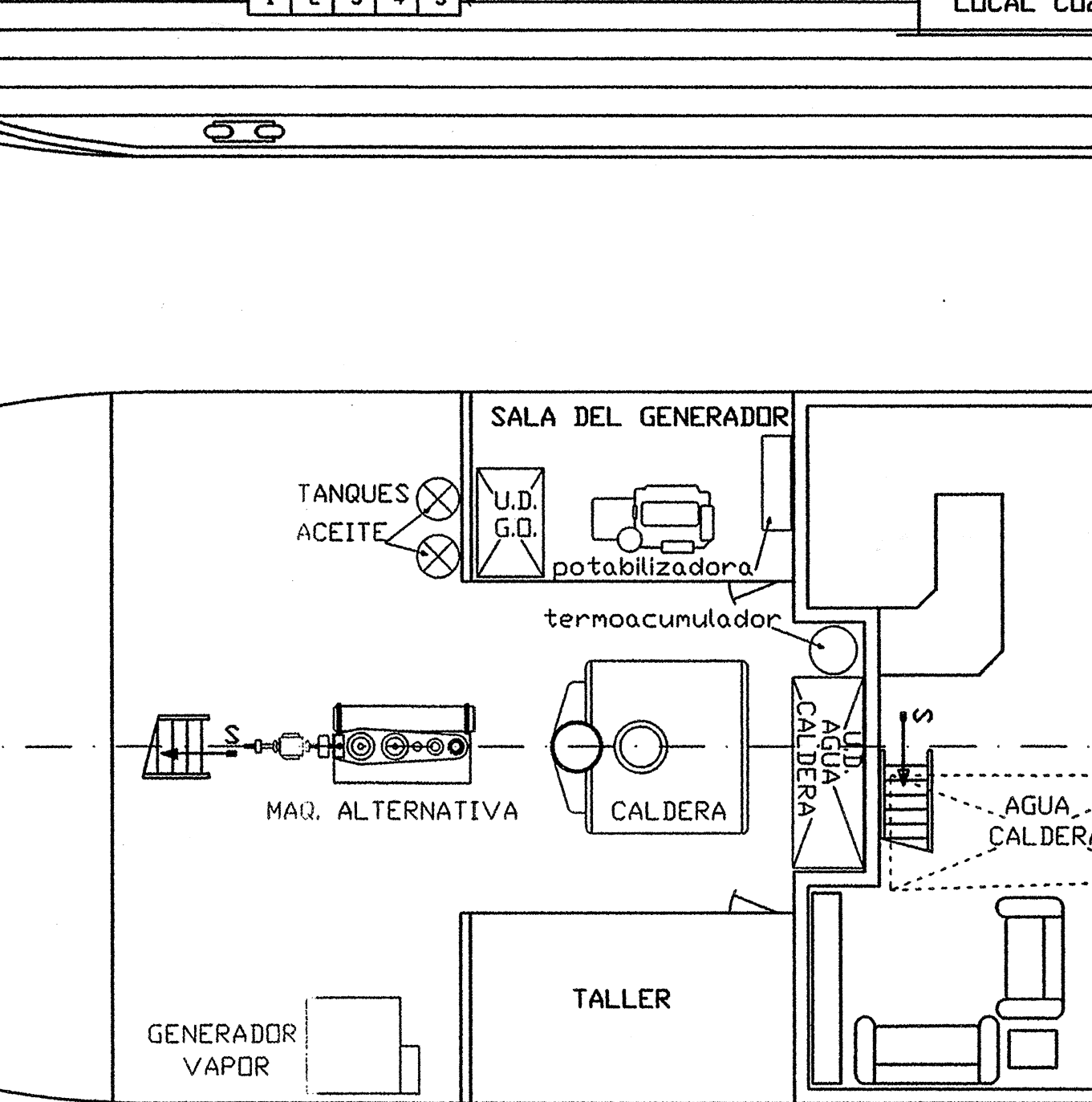




Ppr







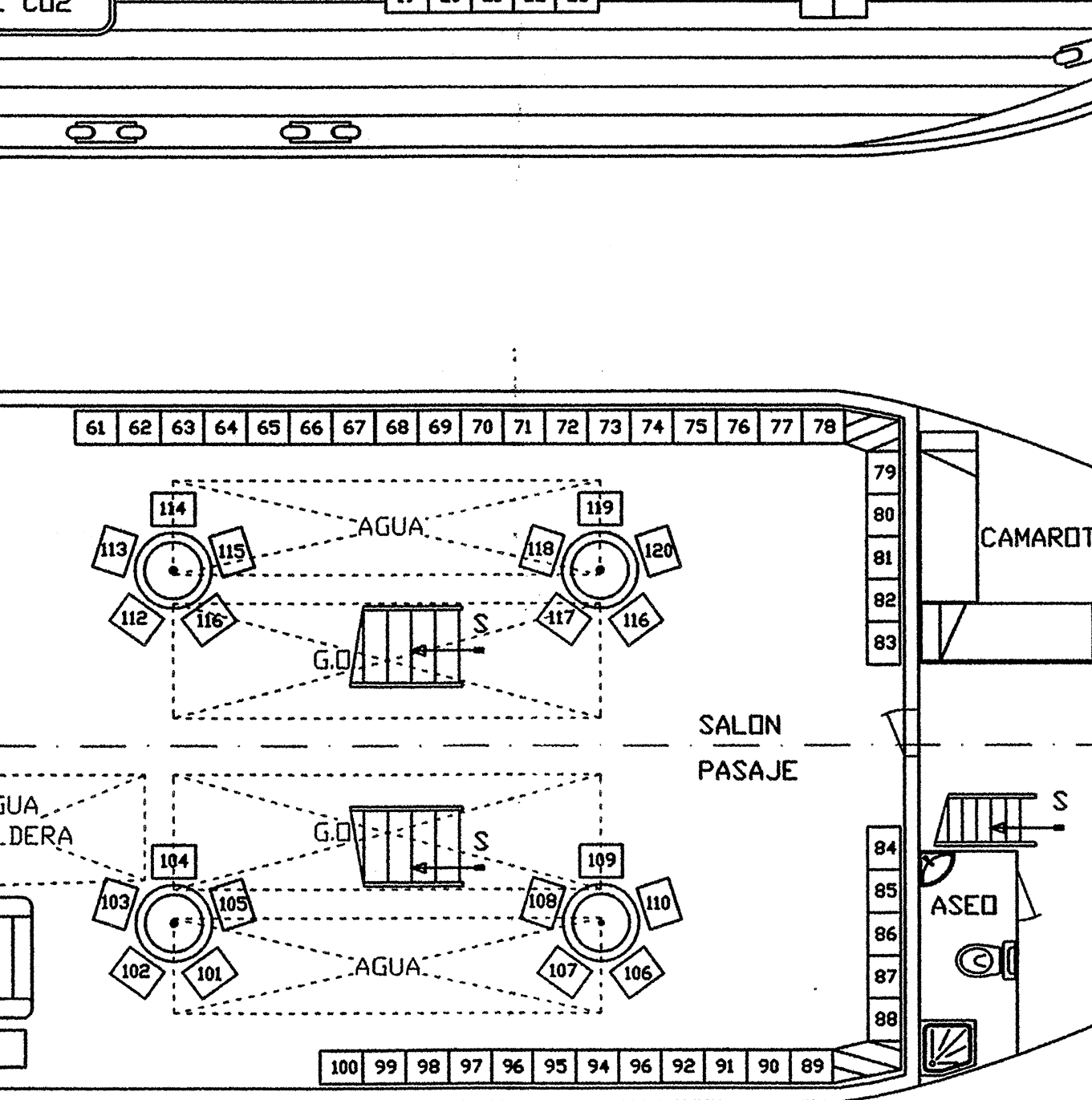
CARACTERISTICAS PRINCIPALES:

ESLORA TOTAL.....30,05

ESLORA ENTREPERPENDICULARES.....27,00

MANGA FUERA DE FORROS.....7,64

PUNTA.....7,64



S:

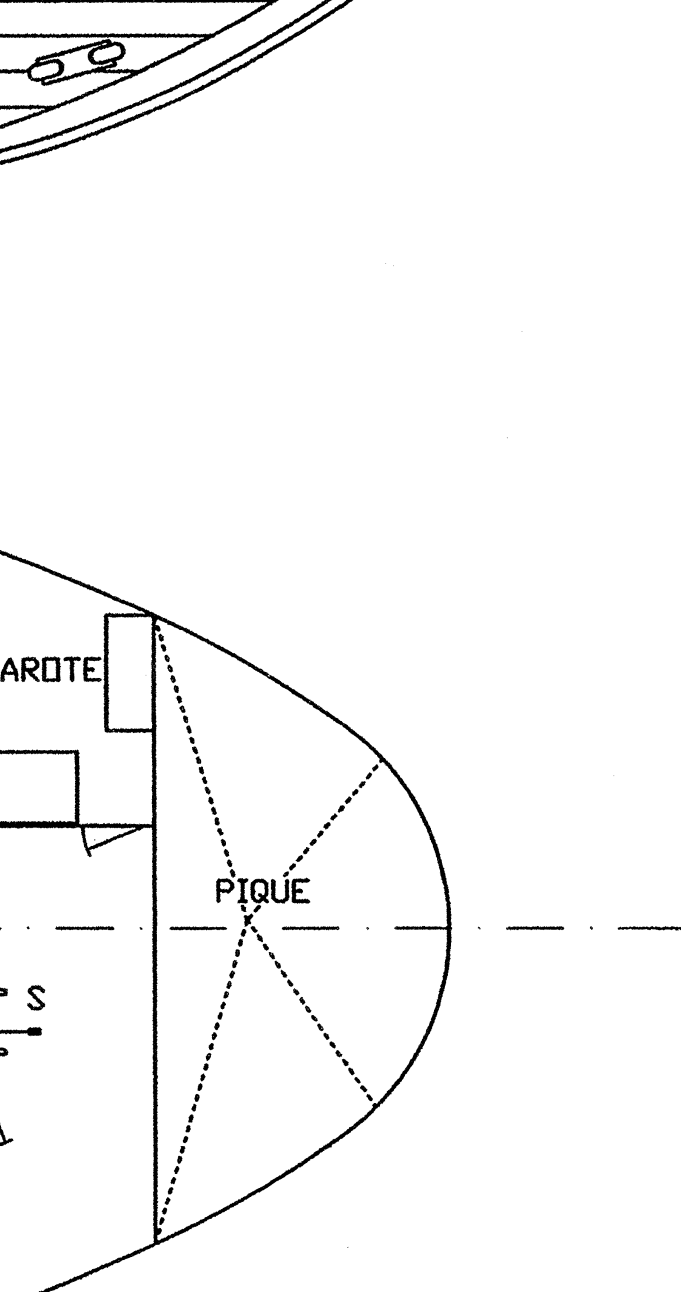
0,05 m.

7,00 m.

,64 m.

64

BUQUE: <i>HIDRIA II</i>	CLASE I	AF
	GRUPO G	D. VA
DESIGNACION:		



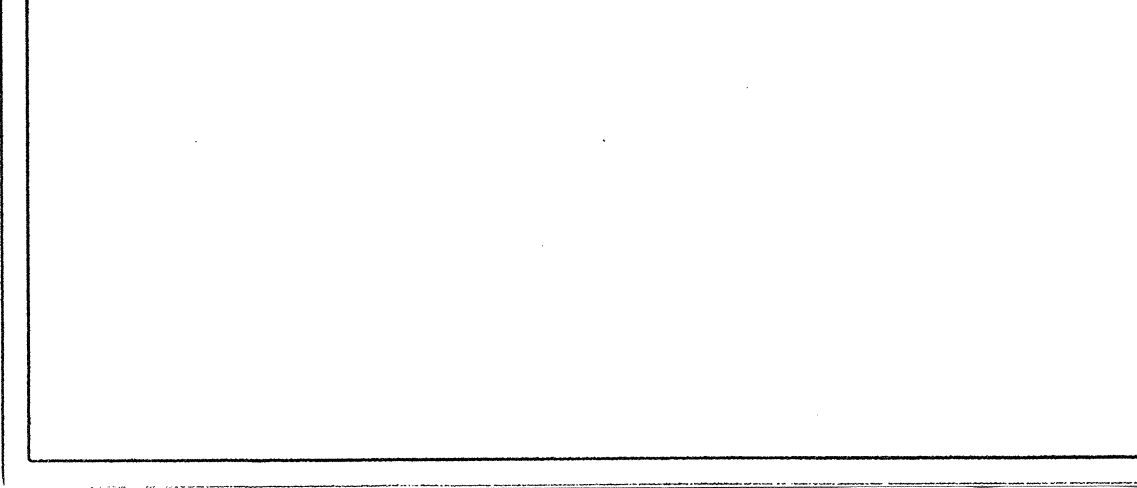
GUILLERMO GEFARIL CHAMOCHIN
INGENIERO NAVAL

ARMADOR:

D. MARIA JOSE OTERO CASTRO
VAPORES DEL ATLANTICO S.L.

MATERIAL:

MADERA



MINERAS DE PUNTA.....7,64

,64 m.

DESIGNACION:
DISPOSICION
GENERAL

ESCALA:

1/75



ESTE PLANO ES PROPIEDAD
DE GESTENAVAL. ESTA
PROHIBIDA SU REPRODUCCION
O ENTREGA A TERCEROS SIN
CONSENTIMIENTO ESCRITO DE
GESTENAVAL.

FIRMA

GESTENAVAL SL		C/Mendez Nufiez, 35 1º	
		36600 VILLAGARCIA DE AROSA	
		PONTEVEDRA	
		TEL: 986508436-FAX: 986507432	
INGENIERIA NAVAL Y CONSULTORIA			
FIRMA		PLANO Nº:	
		Nº HOJAS:	HOJA Nº: